



Ian Cox SWAc
2025 STUDIO EXHIBITION
Catalogue

Welcome to the Exhibition Catalogue!

A little over four years ago I moved into my studio beneath the Artizan Gallery here in Fleet Walk, Torquay. I'm fairly sure I've produced more art in those four years than I have in the many decades that preceded them (and I left art college back in the late 1970's, so there have been a lot of decades!)

But everything changes, and everything stays the same, as the saying goes...

At the end of December 2025 I will be vacating my studio here in the town centre to relocate to my home studio about a mile away, where I plan to continue my journey down the various rabbit holes that comprise my art practice!

I'm going to spend my remaining time in my Artizan studio showcasing the work I've produced here with the studio exhibition for which this document is the catalogue. The exhibition will be open from Tuesday 2nd December, until Christmas Eve 2025).

The exhibition features over 50 wall-mounted works and countless others in browsers and folders.

Here is your guide to visiting the exhibition in person and/or virtually, by way of this Catalogue.

Visiting in person

Location: Artizan Collective Gallery, 5 Fleet Walk, 74 Fleet St, Torquay TQ2 5EB (see map below). My studio is in the basement below, and accessed via, the gallery

Nearest parking: Fleet Walk car park - TQ2 5EA - the entrance is on your left shortly after the roundabout near the old Pavilion building (see map)

Opening times: 11-5 Tuesday to Saturday and 11-4 on Sundays (closed on Mondays)

Visiting digitally

You can use this catalogue to browse most of the works in the exhibition. I've reproduced them here so they are all to scale in relation to each other - which means that some may appear annoyingly small - if that is the case, please contact me and I'll send you a larger image of the work/s you're interested in.

How to contact me

Phone/WhatsApp: **07801 889463**

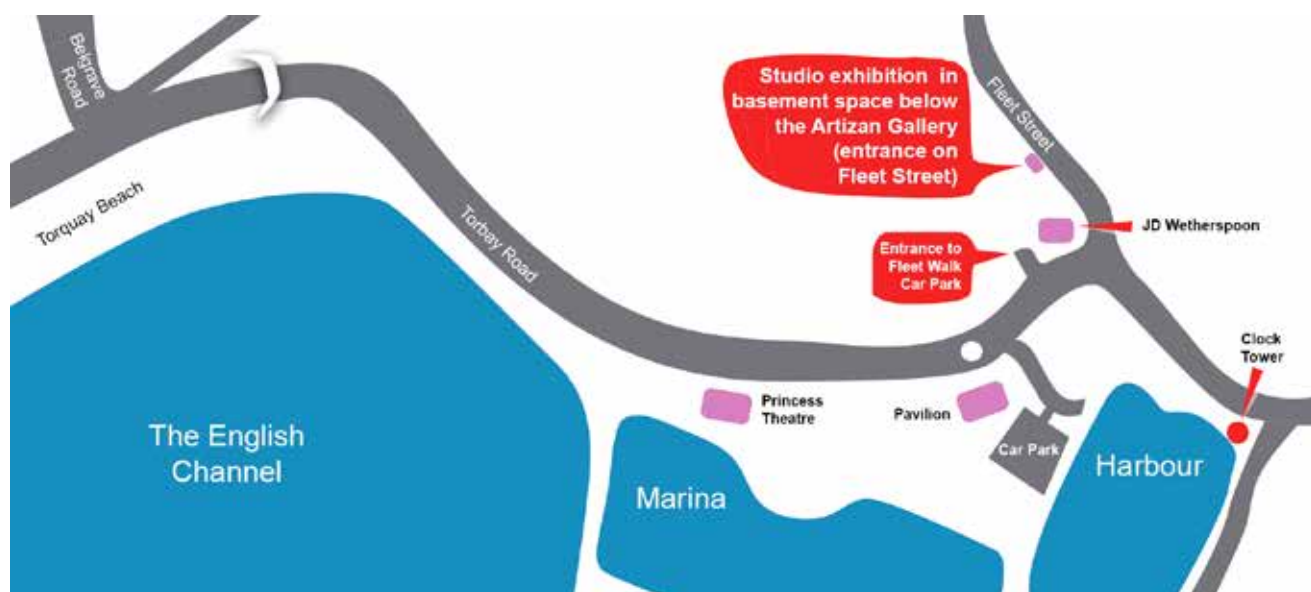
Email: **ian.cox@gomango.co.uk**

Facebook Messenger: **/ianrcox**

Instagram: **/iancoxarts**

Website: **www.iancoxarts.co.uk**

Continued



Your £100 voucher!

As a thankyou to everyone for engaging with my work (from near and afar) I'm giving a £100 voucher (also worth about 114 Euros, 132 US dollars, or whatever the currency convertors say the value is in your currency!) A voucher will be assigned to everyone aged over 18 who sends me a catalogue request or who visits the exhibition in person.

You can use your voucher against the purchase of any *single* artwork (even if that work is priced *below* £100) - so if you buy a work priced at, say, £30, you won't be able to put the remaining £70 towards the purchase of another work - but you will be the owner of an artwork that has cost you nothing!

Please bear in mind that this is a 'first come, first served' arrangement - if the work is a one-off drawing or monotype print it'll go to the first person who requests it (but in the case of my limited edition linoprints and mezzotints there's usually more than one of each print available - so there's a reasonable chance that such a work will still be available towards the end of the exhibition).

Purchasing framed work

In most cases, if you are purchasing from afar it will make sense to purchase the work *unframed*. This will reduce the weight of the item and will remove the worry about glass being broken in transit. My costs for framed pieces reflect a reasonable estimate of the cost of framing, so it probably makes sense to arrange to have the work framed at your end.

Delivery costs

As the buyer, you will be responsible for the cost of delivery.

After you confirm your order, I will let you know the cost of the delivery options - if they are acceptable to you then they will be added to the cost of your purchase. Please note that your voucher can't be used to pay delivery charges.

How to arrange payment

The easiest way to make your payment will be by Bank Transfer, or you can pay into my PayPal account. I will send you details of both after I've confirmed that the work you want to buy is available and we have agreed on delivery costs etc.

What if you don't like the work when you see it in real life?

Firstly, I will send you a larger image of the work/s, so you don't have to rely on the small image/s in this catalogue and I'll reserve the work for 24 hours to give you time to review the image/s.

If you find that the work, on arrival with you, doesn't live up to your expectations, you can send it back. The cost of return delivery (like the costs of the outgoing delivery) will have to be met by you. As soon as the work arrives back with me I will refund whatever you have paid for it.

Please contact me if you need any more information...



Some notes on the techniques I use...

Mezzotint, regarded by some as the most challenging of fine-art printmaking techniques, is an intaglio (from the Italian for 'incised') technique that requires a complex textured surface be laboriously created on a copper plate using a multiple-toothed rocker tool. The pitted surface created by the rocker holds ink and prints as a rich, dense, velvety black.

I use metal scrapers and metal or crystal burnishers to 'flatten' selected areas of the burred surface of the plate. This scraped or burnished surface holds less ink which provides the lighter areas of the desired image.

Apart from the lush blacks, mezzotint enables the artist/printmaker to work with a tonal range that cannot be matched by other hand-made printmaking techniques.

But did I mention that it is also very a challenging technique?!

A **linoprint** is a relief printmaking technique produced from a linoleum block, onto the surface of which I draw and then cut an image using fine steel gouges. The areas of the block to be inked and printed are left uncut (in relief) while the areas of the design not intended to take the printing ink are cut away.

When the cutting is complete, the block is inked and printed by hand (for works too large to fit on my press) or on my etching press (using very light pressure).

The multi-block method uses a separate piece of lino for each colour (see 60 - Pollarded Willow, which is a three-block print), while the reduction method uses a single lino block which is carved, then printed, before being carved and printed again, which allows the image to be built up over a number of printing stages from the single block - most of my linoprints are made using the reduction method.

A **monotype** print is a one-off print - it cannot be repeated as it is not made from a surface that is etched, burnished, scraped or carved with a 'source' image.

My preferred monotype technique involves covering a plastic surface with etching ink, which I selectively remove to create the image I want to print onto paper (which is usually dampened prior to printing). I work with a variety of papers from robust etching paper to more fragile Japanese tissue papers.

My monotype prints fall into the relief print category, but I also like to introduce an intaglio element by lightly scoring the surface of the plastic. As I remove the ink as in the way described above, some of it is retained within the scored lines on the plastic, which provides an interesting background texture to the printed image - (see 24 - Horizon which shows this quite clearly).

I am also currently exploring colour monotypes that involve a number of print stages using different surfaces and various colour agents from watercolour paint to coloured charcoal. (see 3 - Nine Trees for a good example of this).

Charcoal and pastel drawings

My charcoal drawings are made with every form of charcoal available, from charcoal dust, traditional charcoal willow sticks, and from chunky black and coloured charcoal to charcoal pencils (my preferred brand being the 'Generals' range of pencils). I mostly work on 300gsm Hahnemühle *etching* paper.

I also like to combine dry pastel (in the form of pastel crayons, sticks and Pan Pastel cakes) with charcoal. These works are also made on 300gsm Hahnemühle paper.

I like to be as open as possible about the techniques I use, so if you have any questions, observations or advice please feel free to contact me.

1 Fernworthy Forest

Mezzotint - 50x35cm - 2025

Hand-printed on Hahnemühle 300gsm etching paper

£400 (unframed) | **£525** (framed)



2 After the Rain - Bellever

Mezzotint - 50x35cm - Edition of 7 - 2024

Hand-printed on Hahnemühle 300gsm etching paper. Selected and shown at the Woolwich Contemporary Print Fair in 2024

£950 (unframed) | **£1150** (framed)



3 Nine Trees

Monotype - 48x39cm - 2025

A hand-printed one-off print. Selected and shown at the RE International Original Print exhibition at Bankside, London in 2025

£400 (unframed) | **£450** (framed)



4 Small Gods

(full set)

Mezzotint - 45x12cm - 2024

Four plates, hand-printed onto a single sheet of Hahnemühle 300gsm etching paper

£400 (unframed) | **£525** (framed)



5 Of the Confluence of Rivers

(Individual print from the Small Gods set)

Mezzotint - 45x12cm - 2024

Four plates, hand-printed onto a single sheet of Hahnemühle 300gsm etching paper

£100 (unframed) | **£140** (framed)



6 Of Death and Fertility

(Individual print from the Small Gods set)

Mezzotint - 45x12cm - 2024

Four plates, hand-printed onto a single sheet of Hahnemühle 300gsm etching paper

£100 (unframed) | **£140** (framed)



7 Of Wells and Springs

(Individual print from the Small Gods set)

Mezzotint - 45x12cm - 2024

Four plates, hand-printed onto a single sheet of Hahnemühle 300gsm etching paper

£100 (unframed) | **£140** (framed)



8 Of Long Days and Waiting

(Individual print from the Small Gods set)

Mezzotint - 45x12cm - 2024

Four plates, hand-printed onto a single sheet of Hahnemühle 300gsm etching paper

£100 (unframed) | **£140** (framed)



9 Dunes

Monotype - 48x39cm - 2025

A hand-printed one-off print

£400 (unframed) | **£525** (framed)



10 Dune

Monotype - 23x15cm - 2025

A hand-printed one-off print

£175 (unframed) | **£200** (framed)



11 Jardim da Cordoaria

Monotype - 18x29cm - 2025

A hand-printed one-off print

This work can be reserved for possible purchase but confirmation of its availability may be delayed until later in January 2026

£275 (unframed) | **£300** (framed)



12 Saddle Rock

Monotype - 23x16cm - 2025

A hand-printed one-off print

£175 (unframed) | **£200** (framed)



13 Sixth Sense

Dry pastel and charcoal
drawing - 61x94cm - 2025

*Drawing on Hahnemühle
300gsm etching paper*

£3500 (unframed)

£3750 (framed)



14 Snowhouse

Linoprint - 58x21cm
Edition of 7 - 2022

Hand-printed original print

£250 (unframed)

£325 (framed)





15 Angelus

Charcoal drawing - 95x65cm - 2025 *Drawing on Hahnemühle 300gsm etching paper.*

Note - this drawing is currently on exhibition at the RWA in Bristol where it is available to purchase until the end of 2025.

£1000 (unframed) | **£1250** (framed)

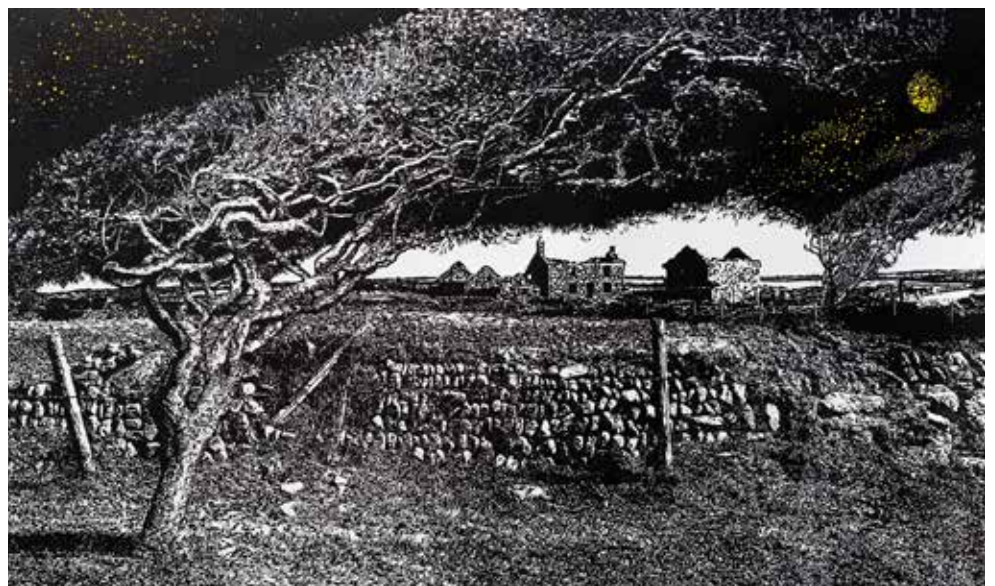
16 Farmhouse Ruin

Linoprint - 64x38cm -
Edition of 50 - 2025

*Hand-printed on Zerkall
225gsm smooth paper*

£650 (unframed)

£725 (framed)



17 Timeless

Monotype
18x29cm
2025

*A hand-printed one-off
print*

£175 (unframed)

£200 (framed)

**20 Waiting**

Monotype
18x29cm
2025

*A hand-printed one-off
print*

£175 (unframed)

£200 (framed)

**18 Glass Mountain**

Monotype
18x29cm
2025

*A hand-printed one-off
print*

£175 (unframed)

£200 (framed)

**21 Moorland**

Monotype
18x29cm
2025

*A hand-printed one-off
print*

£175 (unframed)

£200 (framed)

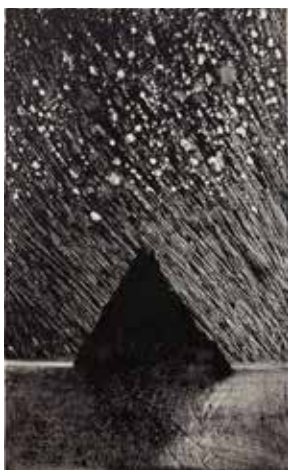
**19 Island**

Monotype
18x29cm
2025

*A hand-printed one-off
print*

£175 (unframed)

£200 (framed)

**22 The Circle**

Monotype
18x29cm
2025

*A hand-printed one-off
print*

£175 (unframed)

£200 (framed)



23 Rainfall over the North Moor

Monotype - 48x39cm - 2025

A hand-printed one-off print

£300 (unframed) | **£350** (framed)



24 Horizon

Monotype - 50x40cm - 2025

A hand-printed one-off print

£300 (unframed) | **£350** (framed)



25 Hound Tor

Monotype - 50x40cm - 2025

A hand-printed one-off print

This work can be reserved for possible purchase but confirmation of its availability may be delayed until later in January 2026

£300 (unframed) | **£350** (framed)



26 Estuary

Monotype - 50x40cm - 2025

A hand-printed one-off print

This work can be reserved for possible purchase but confirmation of its availability may be delayed until later in January 2026

£300 (unframed) | **£350** (framed)



27 North Teign River

Monotype - 48x39cm - 2025

A hand-printed one-off print

£300 (unframed) | **£350** (framed)



28 Thatcher Rock

Monotype - 50x40cm - 2025

A hand-printed one-off print

This work can be reserved for possible purchase but confirmation of its availability may be delayed until later in January 2026

£300 (unframed) | **£350** (framed)



29 Shade

Monotype - 48x39cm - 2025

A hand-printed one-off print

£300 (unframed) | **£350** (framed)

**30 Wistman's**

Monotype - 50x40cm - 2025

A hand-printed one-off print

£300 (unframed) | **£350** (framed)

**31 Hiding Place**

Monotype - 50x40cm - 2025

A hand-printed one-off print

£300 (unframed) | **£350** (framed)



32 Penwith Beach

Linoprint - 34x50cm - Edition of 9 - 2022

A limited edition, hand-made, print

£275 (unframed) | **£350** (framed)

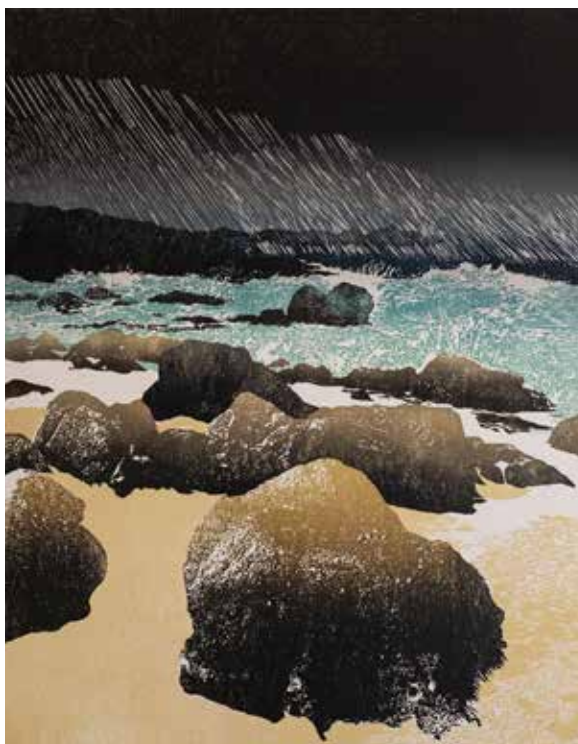


33 Arrival

Linoprint - 37x47cm - Edition of 18 - 2022

A limited edition, hand-made, print

£275 (unframed) | **£350** (framed)



34 Wistman Oak

Linoprint - 40x69cm - Edition of 26 - 2021

A limited edition, hand-made, print

£300 (unframed) **£375** (framed)

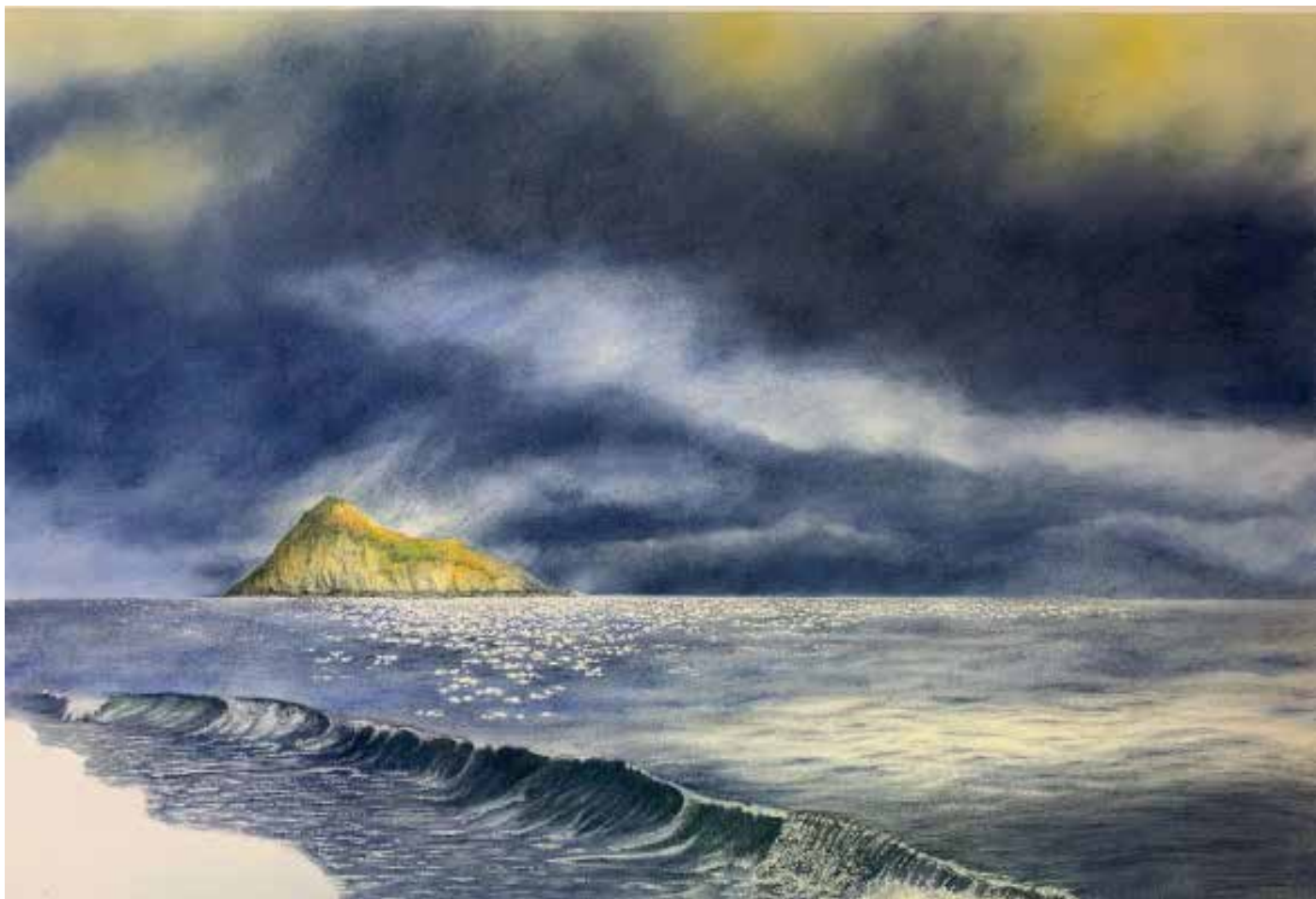


35 Cove Boats

Linoprint - 70x28cm - Edition of 20 - 2021

A limited edition, hand-made, print

£225 (unframed) **£300** (framed)



36 Thatcher Rock

Pastel drawing - 95x65cm - 2024 *Drawing on Hahnemühle 300gsm etching paper*

£1000 (unframed) | **£1250** (framed)



37 Holly Tree, Dartmoor

Linoprint - 30x35cm - 2020

A limited edition, hand-made, print

£225 (unframed) | **£300** (framed)

38 Boulder Pool

Charcoal drawing
65x43cm
2023

*Drawing on Hahnemühle
300gsm etching paper*

£800 (unframed)

£950 (framed)



39 Blackator Copse

Charcoal drawing
64x43cm
2023

*Drawing on Hahnemühle
300gsm etching paper*

£1000 (unframed)

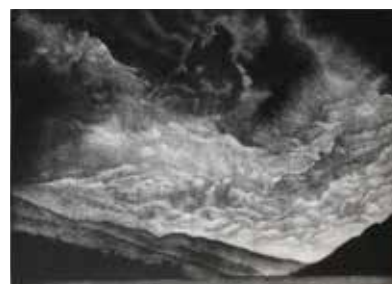
£1150 (framed)



40 Double Rainbow

Mezzotint - 25x18cm - 2023

£150 (unframed) **£200** (framed)



41 Loch Lomond

Mezzotint - 25x18cm - 2023

£150 (unframed) **£200** (framed)



42 Citadel

Charcoal drawing - 95x64cm - 2024 *Drawing on Hahnemühle 300gsm etching paper*

£2500 (unframed) | **£2750** (framed)



43 Hedgerow, Shropshire

Linoprint - 58x21cm - 2020
A limited edition, hand-made, print

£275 (unframed) | **£350** (framed)

44 **Circularity**

Linoprint - 30x35cm - 2022

A limited edition, hand-made, print

£225 (unframed) | **£300** (framed)



45 **The Tolmen**

Linoprint - 40x57cm - 2022

A limited edition, hand-made, print

£275 (unframed) | **£350** (framed)



46 You Are My Sea

Dry pastel drawing - 44x32cm - 2025

£600 (unframed) | **£750** (framed)



47 Melt

Monotype - 36x50cm - 2025

A hand-printed one-off print

£375 (unframed) | **£450** (framed)



48 The Invitation

Mezzotint - 35x25cm - 2022

A limited edition, hand-made, print

£200 (unframed) | **£250** (framed)

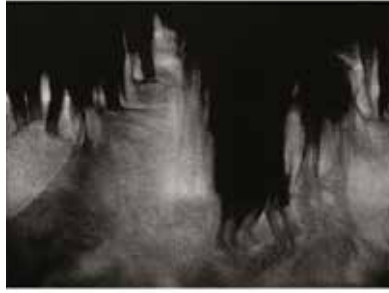


49 **As Ghosts Become Us**

Mezzotint - 40x57cm - 2022

Limited edition, hand-made, print

£200 (unframed) | **£250** (framed)



50 **Lily**

Mezzotint - 40x57cm - 2022

A limited edition, hand-made, print

£200 (unframed) | **£250** (framed)



51 **Wistman Oak**

Mezzotint - 18x25cm - 2022

A limited edition, hand-made, print

£200 (unframed) | **£250** (framed)



52 **Beacon Cove**

Mezzotint - 20x12cm - 2025

A limited edition, hand-made, print

£200 (unframed) | **£250** (framed)



53 **The Bay**

Mezzotint - 35x25cm - 2022

A limited edition, hand-made, print

£200 (unframed) | **£250** (framed)

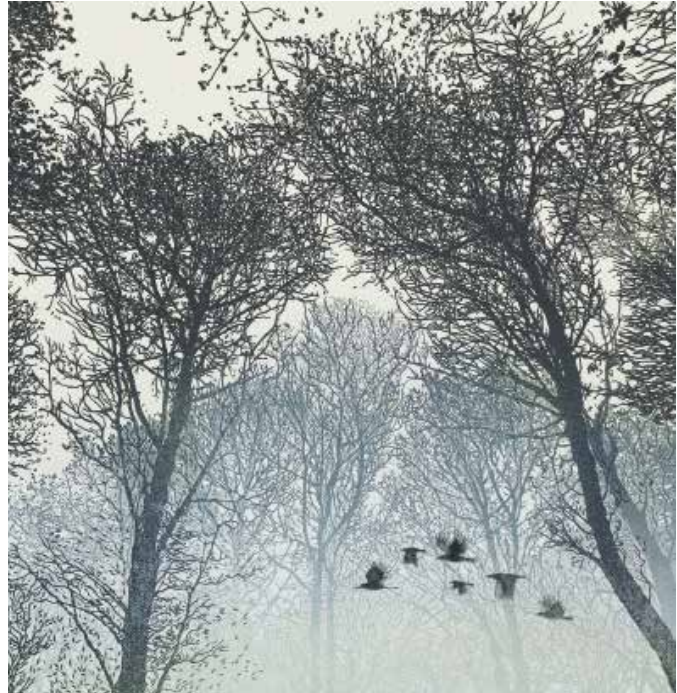


54 As the Crows Fly

Linoprint - 44x43 - 2023

A limited edition, hand-made, print

£300 (unframed) | **£375** (framed)

**55 Among Us**

Linoprint - 42x60cm - 2023

A limited edition, hand-made, print

£700 (unframed) | **£850** (framed)



56 My Familiar Friend

Linoprint - 50x40 - 2023

Limited edition, hand-made, print

£175 (unframed) | **£250** (framed)



57 Hawthorns

Linoprint - 52x43cm - 2022

A limited edition, hand-made, print

£450 (unframed) | **£575** (framed)





58 Tamarisk

Charcoal drawing - 95x65cm - 2024

Drawing on Hahnemühle 300gsm etching paper

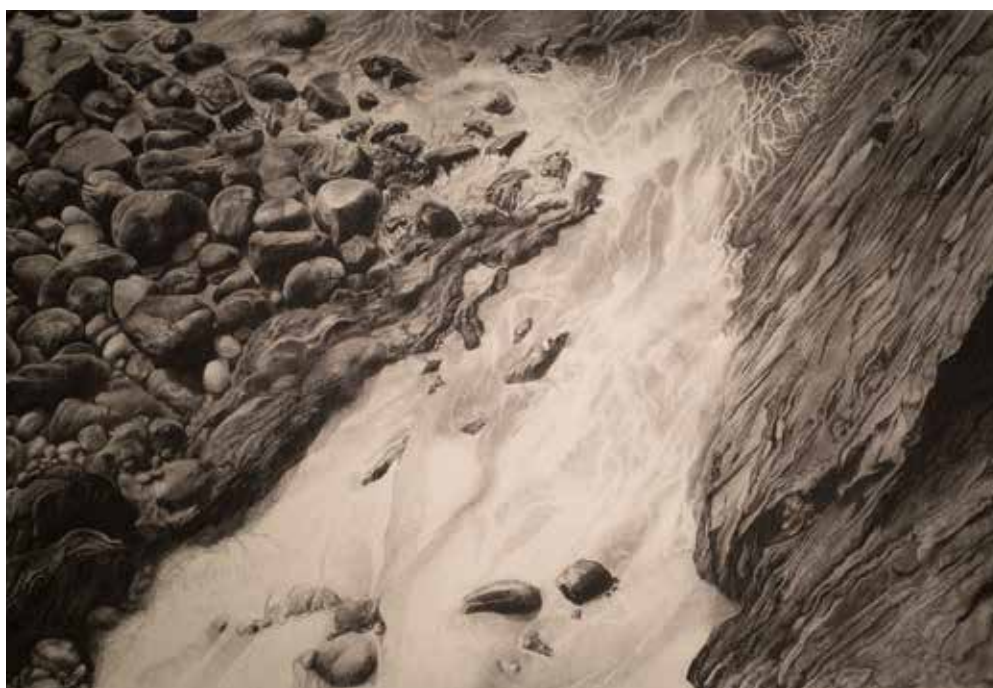
£1000 (unframed) | **£1250** (framed)

59 Cornwall Coastal

Charcoal drawing
64x43cm - 2022

£750 (unframed)

£900 (framed)



60 Pollarded Willow

Linoprint - 37x41cm - 2023
A limited edition, hand-made, print

£300 (unframed)

£400 (framed)



61 Cornish Hedgerow

Linoprint - 60x40cm - 2023
A limited edition, hand-made, print

£300 (unframed)

£400 (framed)



62 Circles of the Sacred Crescent

Linoprint - 50x40 - 2023

A limited edition, hand-made, print

£200 (unframed) | **£275** (framed)



63 Passing Trees

Monotype - 30x40 - 2025

A hand-printed one-off print.

£250 (unframed) | **£325** (framed)



64 After the Rain

Section salvaged from the larger print (see 1 above)

Mezzotint - 13x18cm - 2025

A one-off, hand-made, print

£30 (unframed)

Ref: 001



65 Fernworthy Forest

Section salvaged from the larger print (see 2 above)

Mezzotint - 13x18cm - 2025

A one-off, hand-made, print

£30 (unframed)

Ref: 002



66 After the Rain

Section salvaged from the larger print (see 1 above)

Mezzotint - 13x18cm - 2025

A one-off, hand-made, print

£30 (unframed)

Ref: 003



67 After the Rain

Section salvaged from the larger print (see 1 above)

Mezzotint - 13x18cm - 2025

A one-off, hand-made, print

£30 (unframed)

Ref: 004



68 Crow Moon

Wood engraving - 5x5cm - 2020

*A one-off, hand-made, print
limited edition of 20*

£25 (unframed)



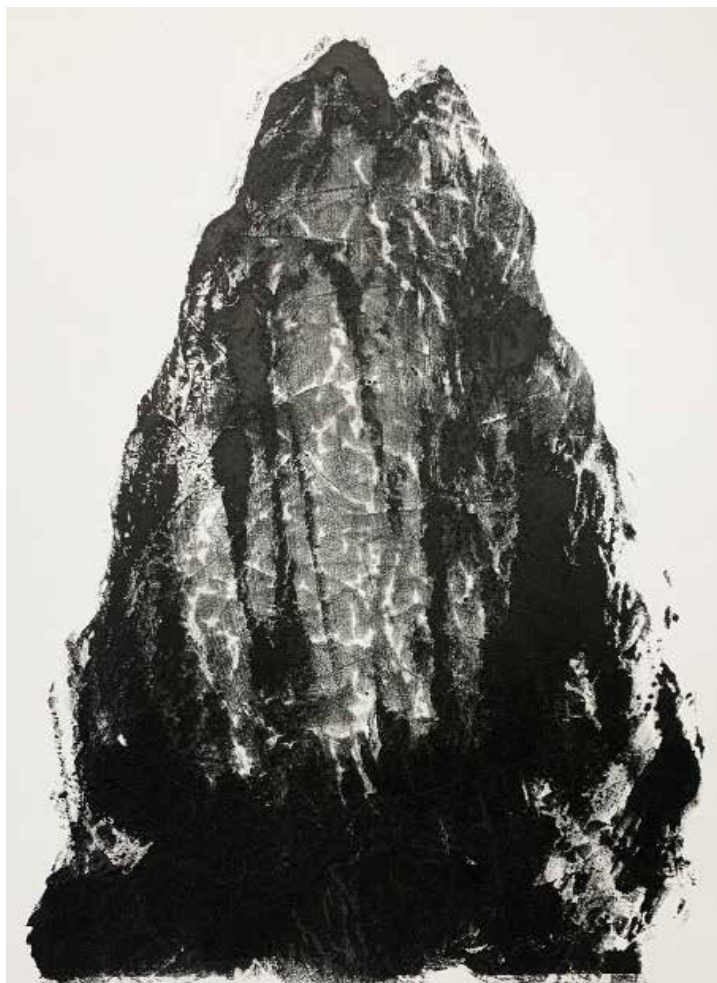
69 Black Rock

Monotype - 53x39cm - 2025

A hand-printed one-off print.

This work can be reserved for possible purchase but confirmation of its availability may be delayed until later in January 2026

£300 (unframed)



70 Standing Stone #1

Monotype - 15.5x23cm
2025

A hand-printed one-off print.

£30 (unframed)



71 Standing Stone #2

Monotype - 15.5x23cm
2025

A hand-printed one-off print.

£30 (unframed)



72 Reflections in Green

Linoprint - 90x90cm - Total number of prints (all colour variants): possibly 15

This, and the image on the next and last page of this catalogue, is still a work-in-progress (although this particular variant is probably finished!)

This is the largest print I've ever made. Measuring in at almost one metre square, it has been made from two lino blocks - each a reduction block - so with every colour printed less of the blocks remain. There are five colours in this variant, seven in the version on the next page.

The project was begun in January 2025 and is likely to be ongoing as we drift optimistically into 2026!

£800 (unframed)



73

Reflections in Grey

Linoprint - 90x90cm - Total number of prints (all colour variants): possibly 15

Please refer to the notes on the previous page (item 72 - Reflections in Green) for more information about this print

£800 (unframed)

END